



Content Management Server

CMS-20

CMS-60

Quick Start Guide

快速安裝手冊

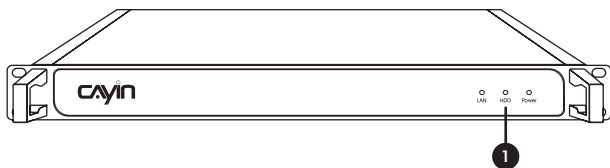
Contents

1. Product Overview	01
1.1 CMS-20	01
1.2 CMS-60	02
2. Installing your CMS Server	03
3. Logging in to Web Manager	05
3.1 Remote Operation	05
3.2 CAYIN Device Seeker	06
3.3 Activating your CMS	07
4. Online Help	08

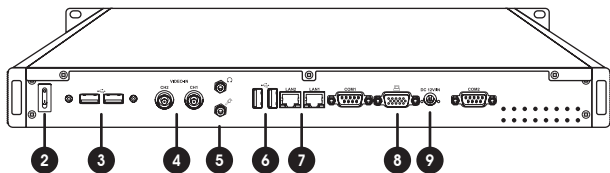
1. Product Overview

1.1 CMS-20

Front View



Rear View



1 Power, LAN & HDD Indicators

2 Power Switch

3 USB x 2

4 Video-In

5 Audio-In

6 USB x 2

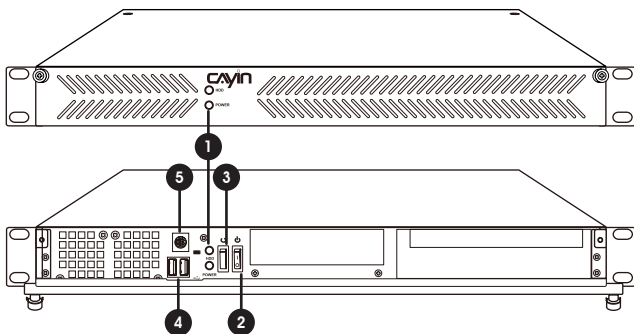
7 Ethernet LAN

8 VGA

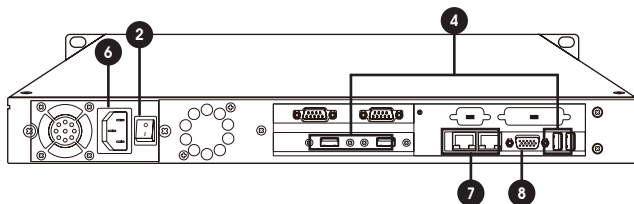
9 Power Connector

1.2 CMS-60

Front View



Rear View

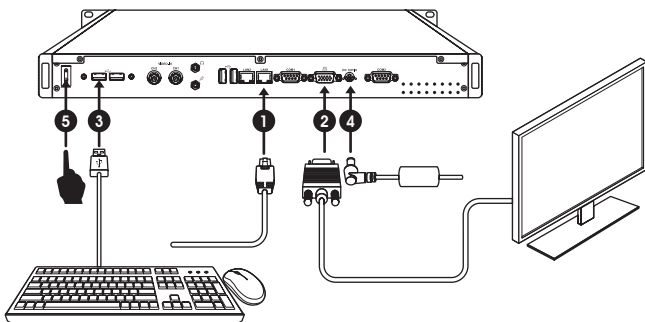


- | | | |
|---------------------------------|-----------------------|--------------------------|
| 1 Power & HDD indicators | 2 Power Switch | 3 Reboot |
| 4 USB x 6 | 5 PS/2 | 6 Power Connector |
| 7 Ethernet LAN | 8 VGA | |

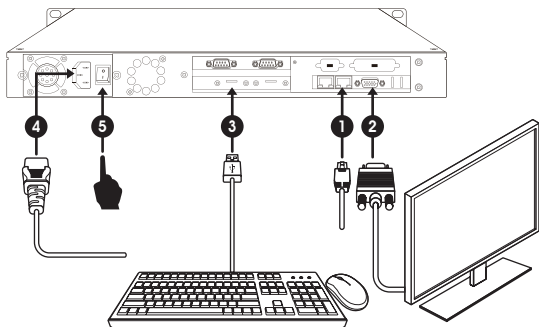
2. Installing your CMS Server

- Step 1** Connect an Ethernet cable from your router or hub to the server's LAN port. (By default, CMS will get an IP address from a DHCP server.)
- Step 2** Connect the VGA cable from the server to your screen.
- Step 3** Connect a keyboard to any of the USB or PS2 connectors.
- Step 4** Connect the power adapter to a socket.
- Step 5** Press the power button to turn on the CMS.
- Step 6** Once the installation is completed, you will see the text console on the screen.

CMS-20



CMS-60



3. Logging in to Web Manager

You can log in CMS' management platform, Web Manager, with network connection.

3.1 Remote Operation

Please follow the steps below to log in and complete network settings.

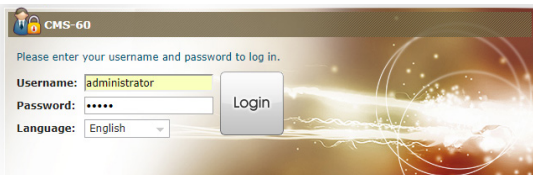
Step 1 Connect a keyboard to a USB or PS2 connector on the CMS server and connect the power adapter to a socket to turn on the system.

Step 2 Choose **NETWORK** and check network settings of this CMS server, e.g. IP address, Subnet mask, Gateway, and DNS. If you do not have a DHCP server to assign an IP address to this CMS server, please choose **Static IP address** and enter a valid IP address.

Step 3 After completing Step 2, return to the main menu and restart the CMS server.

Step 4 You can remove the keyboard from this CMS server now and start to manage the server remotely from your own PC. You can open a browser and type **http://ip_address** in the address bar to access Web Manager.

- Default Username: **administrator**
- Default Password: **admin**

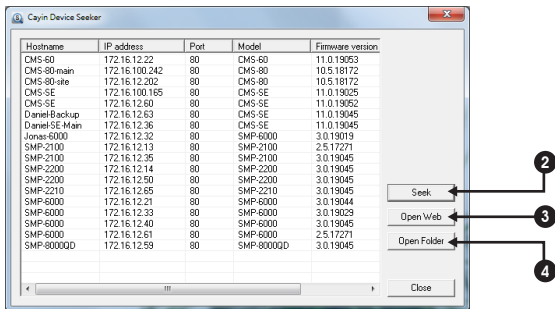


Copyright © CAYIN Technology Co., Ltd. All rights reserved.

3.2 CAYIN Device Seeker

CAYIN Device Seeker is a handy tool for you to search all available SMP players and CMS servers in the same LAN. Please follow the steps below to use it.

Step 1 Insert the product CD into your CD-ROM, and run **CAYIN Device Seeker** (\\Tool\\Device Seeker\\seeker.exe). You can also copy this file to your PC for future management.



Step 2 Click **Seek** and the seeker will search all available SMP players and CMS servers in the same LAN.

NOTE

If your PC and SMP players or CMS servers are not in the same LAN, the Device Seeker cannot function properly. Please open a browser and enter the IP address of the SMP player or CMS server. Once you have successfully logged in, you can start to manage the device.

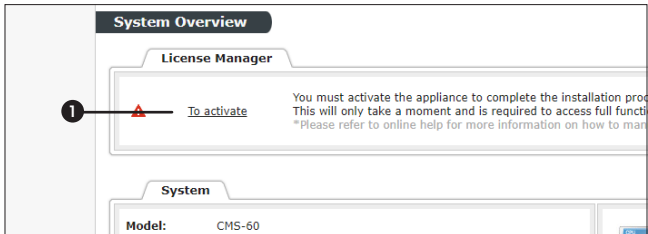
Step 3 If you want to open Web Manager of a device, select it and double click its name. You can also click a device name, and click **Open Web**.

Step 4 If you want to update contents into the device, select the device you want to connect, and click **Open Folder**. Then, you can open the Media Folder of that device and upload files via Network Shares (Network Neighborhood).

3.3 Activating your CMS

Once you are logged in, you will need to activate the appliance to complete the installation process and receive full access.

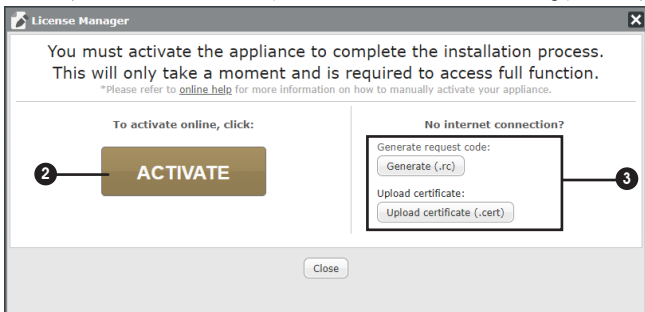
Step 1 Click **To activate** in System Overview, under System>License Manager.



Step 2 If the server has internet connection, click **Activate**.

Step 3 If the server is not connected to the internet, click **Generate**. You will have to mail the generated .rc file to your sales representative. Once your representative completes the activation, you will receive a reply with an activated .cert file. Choose the .cert file, and click **Upload**.

(Please refer to Online Help for more information on activating your CMS)

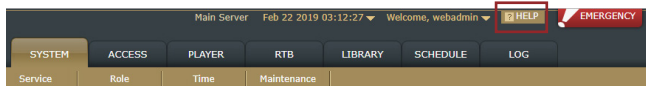


NOTE

Unregistered server can only connect and manage 1 SMP player.

4. Online Help

The CMS User's Guide provides more detailed information of all features. If you have questions about any specific function, please log in Web Manager, go to the configuration page of a specific function and click **HELP** on top of the window. Then the system will show you the reference information of that function.



CAYIN Technology Co., Ltd.

8F-2, No. 577, Linsen N. Rd.

Taipei City 104, Taiwan

TEL: +886-2-25951005

FAX: +886-2-25951050

<https://www.cayintech.com>

Copyright © 2019 CAYIN TECHNOLOGY CO., LTD. All Rights Reserved.

All contents in this manual are the intellectual property of CAYIN Technology Co., Ltd. All brand names, icons, and trademarks that are not the property of CAYIN Technology are the property of their respective holders.

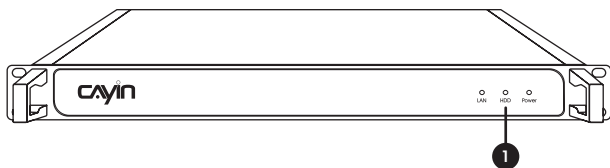
目 錄

1. 產品說明	10
1.1 CMS-20	10
1.2 CMS-60	11
2. 安裝 CMS 伺服器	12
3. 登入 Web Manager	14
3.1 遠端操作.....	14
3.2 鎧應裝置搜尋器	15
3.3 軟體啟用	16
4. 線上說明	17

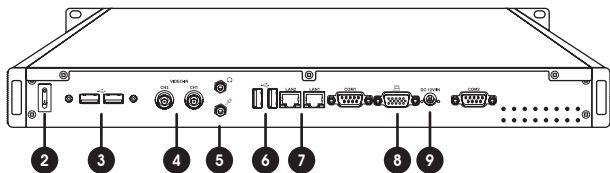
1. 產品說明

1.1 CMS-20

正面



背面



1 電源、網路與硬碟指示燈

2 電源按鈕

3 USB x 2

4 Video-In

5 Audio-In

6 USB x 2

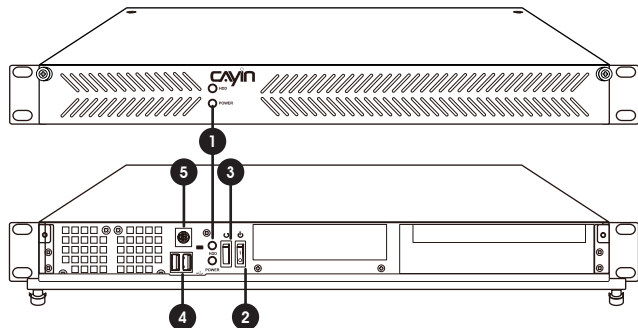
7 乙太網路連接埠

8 VGA

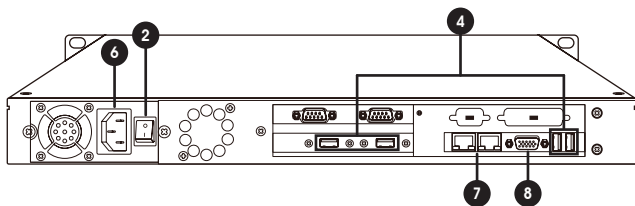
9 電源接頭

1.2 CMS-60

正面



背面



1 電源與硬碟指示燈

2 電源開關

3 重新啟動

4 USB x 6

5 PS/2

6 電源接頭

7 乙太網路連接埠

8 VGA

2. 安裝 CMS 伺服器

步驟 1 將乙太網路線連接到區域網路連接埠 (在預設的狀況下，CMS 會從 DHCP 伺服器上取得 IP 位址) 。

步驟 2 連接 VGA 到螢幕上。

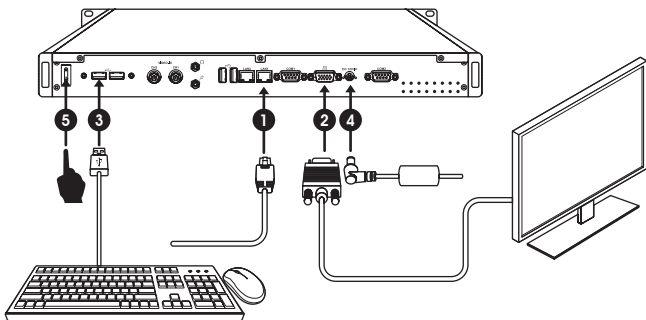
步驟 3 請於任一 USB 或 PS2 接頭連接鍵盤。

步驟 4 連接上電源供應器。

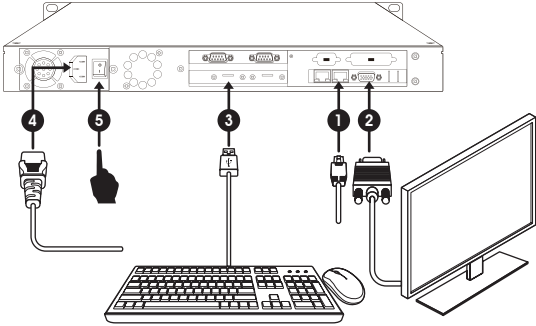
步驟 5 按下電源按鈕啟動 CMS 。

步驟 6 一旦螢幕出現文字控制台畫面，即表示已完成硬體安裝。

CMS-20



CMS-60



3. 登入 Web Manager

您可從您的 PC 透過網路登入 CMS 伺服器的管理平台 Web Manager。

3.1 遠端操作

請依循下列步驟登入管理介面，並完成網路相關設定。

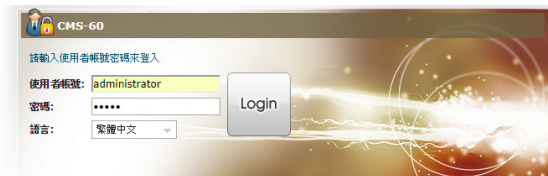
步驟 1 將 CMS 伺服器接上螢幕與鍵盤，再插上電源線並按下電源按鈕來啟動系統。

步驟 2 選取【網路】，然後完成所有與該 CMS 伺服器相關的網路設定，例如：IP 位址、子網路遮罩 (Subnet mask)、通訊閘 (Gateway) 與域名伺服器 (DNS)。

步驟 3 設定完成後，回到主選單然後重新啟動 CMS 伺服器。

步驟 4 現在，您可以移除連接 CMS 的鍵盤，並開始從您的個人電腦上遠端控管伺服器。您可以開啟一個瀏覽器，並在位址列中輸入 **http://ip_address** 來連接 Web Manager。

- 預設的使用者名稱：**administrator**
- 預設的密碼：**admin**

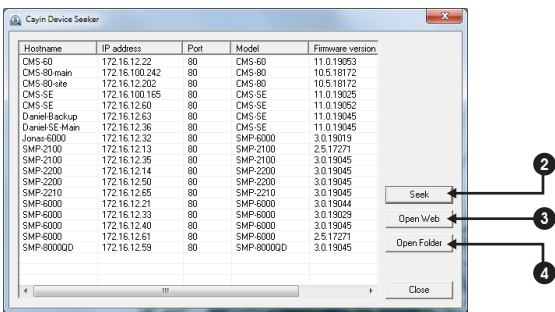


Copyright © CAYIN Technology Co., Ltd. All rights reserved.

3.2 鑑應裝置搜尋器

鑑應裝置搜尋器 (CAYIN Device Seeker) 為一個方便的小工具，讓您能輕鬆搜尋同一區域網路內所有的 SMP 播放器與 CMS 伺服器，使用方法如下：

步驟 1 將產品光碟放到 CD-ROM 中，並且執行【鑑應裝置搜尋器 (CAYIN Device Seeker)】(檔案位於 \Tool\Device Seeker\seeker.exe)。您也可以將此檔案複製一份至您的電腦上，以利未來快速取用管理。



步驟 2 點擊【Seek】，軟體將搜尋相同的子網路端點中可用的 SMP 播放器及 CMS 伺服器裝置。

注意

若您的個人電腦與 SMP 播放器或 CMS 伺服器不在同一區域網路中，Device Seeker 將無法正常運作。請開啟瀏覽器，並在位址列中鍵入 SMP 播放器或 CMS 伺服器的 IP 位址。成功登入後，您就可以開始管理該裝置。

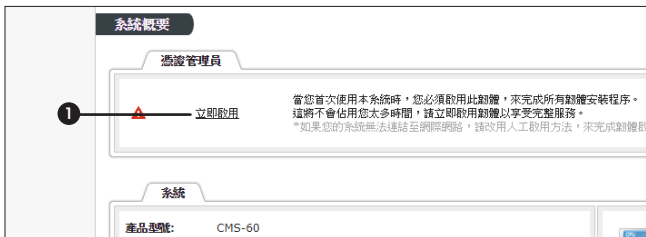
步驟 3 若您想要開啟任一裝置的 Web Manager 管理介面，雙擊該裝置的名稱即可建立連線。您也可以先點選該裝置的名稱，然後點擊【Open Web】。

步驟 4 若您想要更新內容至任一裝置，請先選擇欲連結的裝置名，然後點擊【Open Folder】。如此，您將可以開啟該裝置的多媒體檔案夾，經由網路芳鄰上傳檔案。

3.3 軟體啟用

當您首次登入本機時，必須啟用軟體才能完成安裝程序，並使用機器的完整功能。

步驟 1 請點擊系統概要 > 憑證管理員中的**立即啟用**。



步驟 2 確定網路已連線後請點擊啟用。若機器網路連線正常，您將在成功啟用後數秒看見已啟用的訊息。

步驟 3 若您的機器無法連線至網路，或是線上啟用無法辨識網路時，請點擊**產生認證碼**；.rc 認證檔產生後，請手動 email 至您的銷售人員信箱，您的銷售人員將會進行認證程序並提供 .cert 憑證檔。點擊**上傳憑證**，選擇憑證檔案（上傳前請確認憑證檔案的檔名，與本機的產品號碼相同，否則將無法成功啟用。）並點擊**上傳**。如成功啟用，您將在數秒後看見上傳成功的訊息。



注意

未完成啟用的 CMS，只能連接並管理一台 SMP 播放器。

4. 線上說明

CMS 伺服器的線上使用說明能提供所有功能的詳盡解說。若您對於某項功能的操作方式有疑問，請登入 Web Manager 並進往該功能的設定頁，然後點擊位於視窗上方的【求助】，系統將會顯示該功能的使用說明頁。



鎧應科技股份有限公司

104 台北市中山區林森北路 577 號 8 樓之 2

電話：(02) 2595 1005

傳真：(02) 2595 1050

<https://www.cayintech.com/tw>

著作權 © 2019 鎧應科技股份有限公司。版權所有。

本手冊的所有內容，其著作財產權歸鎧應科技股份有限公司所有。使用手冊中所提到的非鎧應科技的產品、名稱或註冊商標，均屬於其合法註冊公司所有。



TEL: +886-2-25951005 FAX: +886-2-25951050

<https://www.cayintech.com>

電話 : (02) 2595 1005 傳真 : (02) 2595 1050

<https://www.cayintech.com/tw>